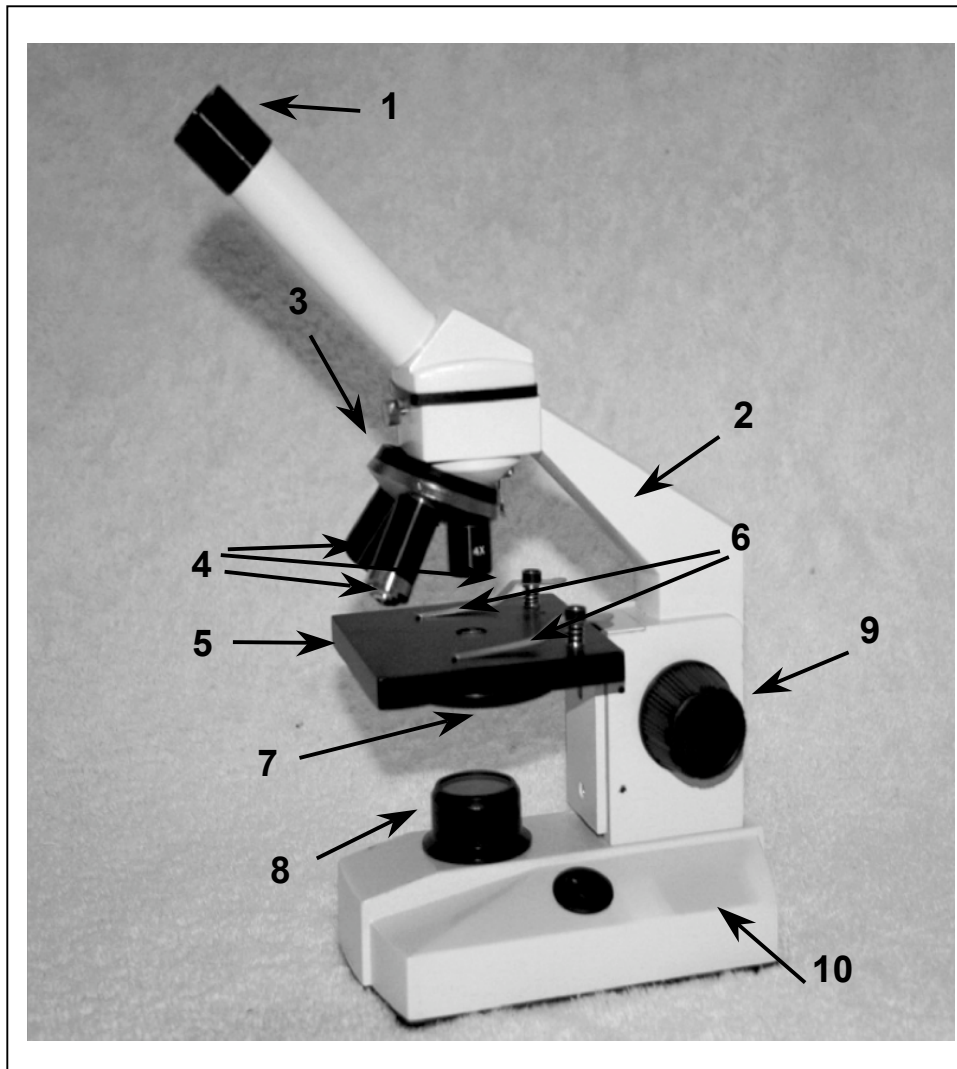
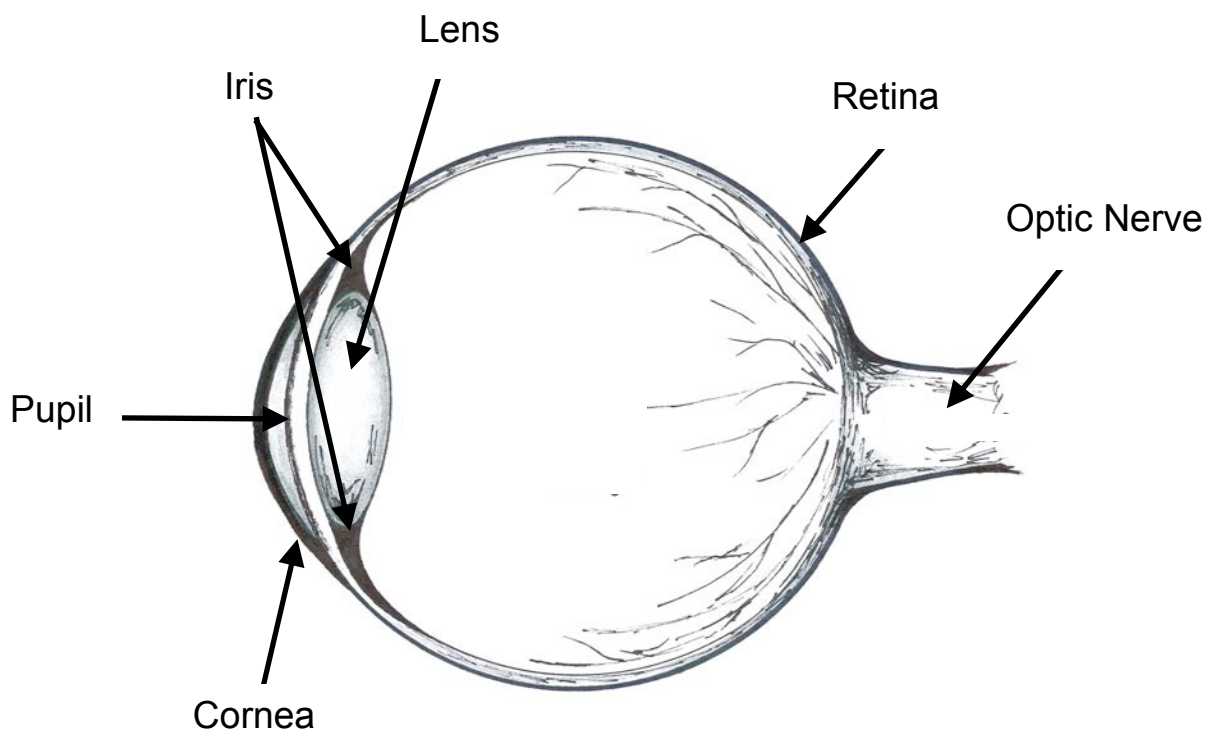


Compound Microscope



- | | | | |
|----|------------------|-----|------------------|
| 1. | eyepiece | 6. | stage clips |
| 2. | arm | 7. | aperture control |
| 3. | nosepiece | 8. | light source |
| 4. | objective lenses | 9. | focus control |
| 5. | stage | 10. | base |

Cross Section of the Human Eye



Monet painting 2, Le Bassin des nymphéas (The Japanese Bridge), 1924



Monet painting 1, Le Bassin des nymphéas (The Japanese Bridge), 1899



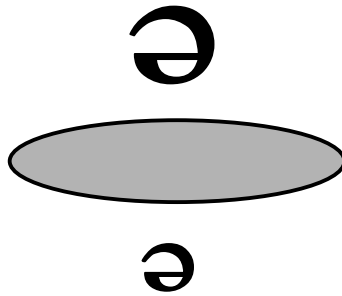
Flowerpot



Image seen through eyepiece

convex lens in eyepiece

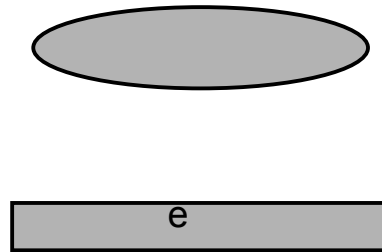
image produced by objective lens



Model Microscope

convex lens in objective

specimen



Compound Microscope Examples

Image seen through eyepiece

image produced by objective lens

specimen

